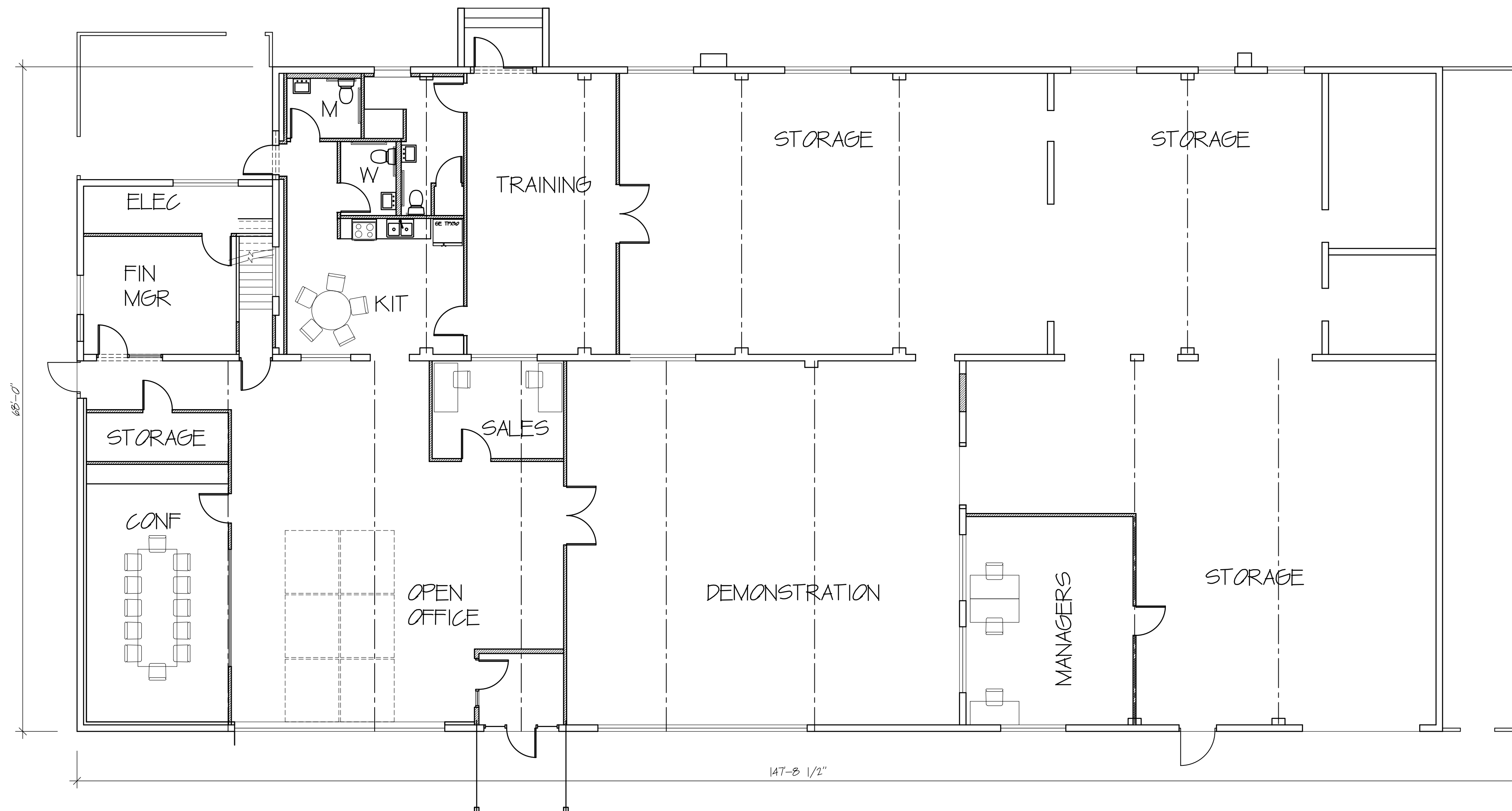
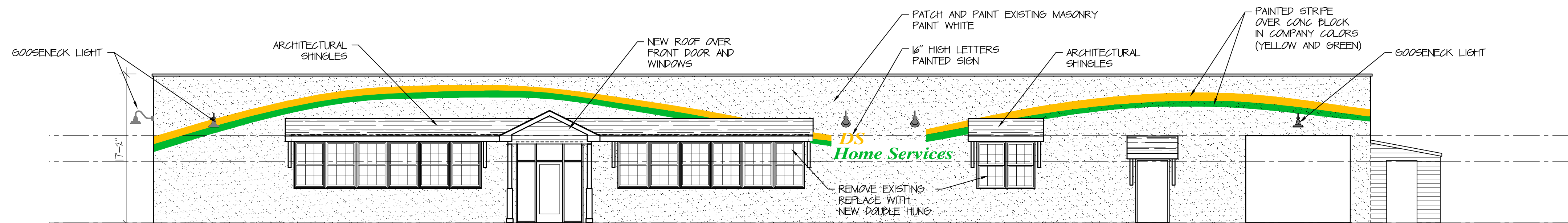


1 SECOND FLOOR PLAN
1/8" = 1'-0"



2 FIRST FLOOR PLAN
1/8" = 1'-0"



3 FRONT ELEVATION
1/8" = 1'-0"

REV 04-14-23 - COMMENTS PER ENGINEERS
MEMO DATED 4-6-23
NO REVS THIS SHEET

S&P ARCHITECTS, P.C.
1022 RTE 976 - SUITE 21
WAPPINGERS FALLS, NY 12590
PH 845-790-0368
PAUL S. PILON, RA • SABRINA B. PILON, RA

PROPOSED ALTERATIONS
FOR
DS ELECTRIC
33 BROWER BLVD
HYDE PARK, NY

PLANS &
FRONT ELEVATION

A-1

AS NOTED

01-25-23