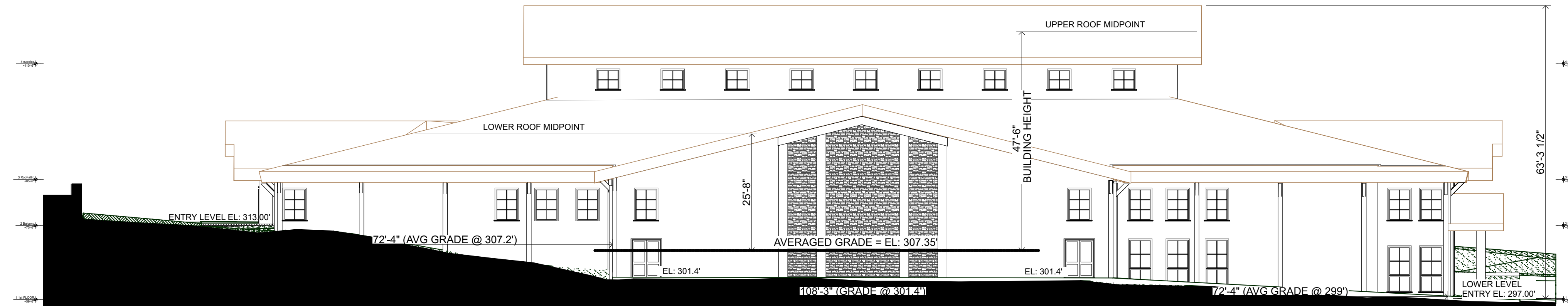


WEST ELEVATION

SCALE: 1/16" = 1'-0"

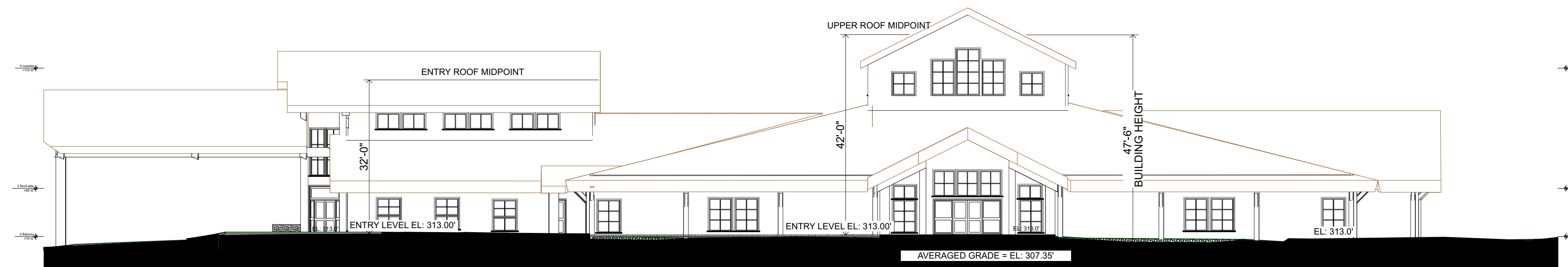
WEST ELEVATION: TOTAL BUILDING LENGTH = 253.0 FT; 14 FT @ EL:302.17'; 33 FT @ AVG EL:307.6'; 206 FT @ EL: 313.0'



EAST ELEVATION

SCALE: 1/16" = 1'-0"

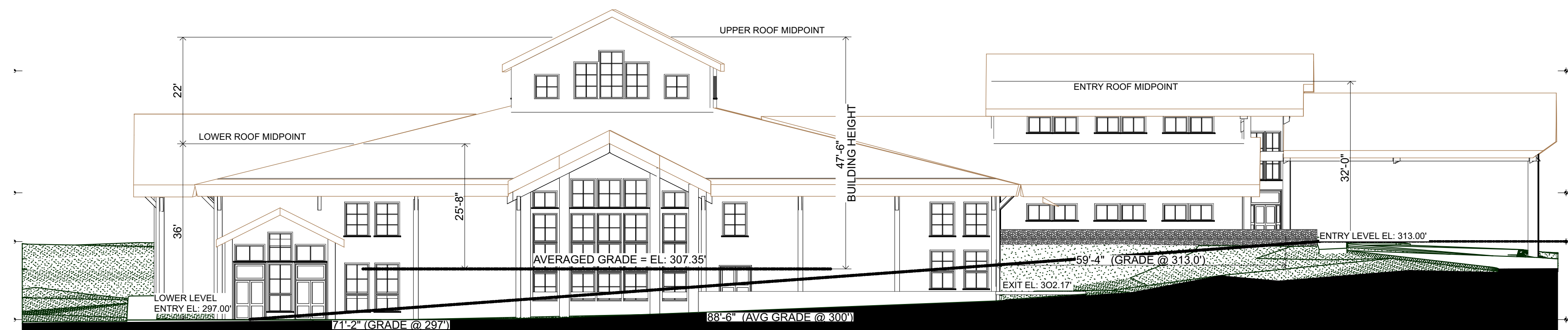
EAST ELEVATION: TOTAL BUILDING LENGTH = 253 FT; 72.33 FT @ AVG EL:307.2'; 108.25 FT @ EL:301.4'; 72.33 FT @ AVG EL: 299.0'



SOUTH ELEVATION

SCALE: 1/16" = 1'-0"

SOUTH ELEVATION: TOTAL BUILDING LENGTH = 219.0 FT; 219.0 FT @ EL: 313.0'



NORTH ELEVATION

SCALE: 1/16" = 1'-0"

NORTH ELEVATION: TOTAL BUILDING LENGTH = 219.0 FT; 71.2 FT @ EL:297.0'; 88.50 FT @ AVG EL:300.0'; 59.33 FT @ EL: 313.0'

WEIGHED AVERAGE GRADE CALCULATION:

WEST ELEVATION:
 TOTAL BUILDING LENGTH = 253 FT.
 A. ELEVATION 302.17' = 14 FT (4230.38)
 B. ELEVATION 307.6' = 33 FT (10150.8)
 C. ELEVATION 313.0' = 206 FT (64478.0)

EAST ELEVATION:
 TOTAL BUILDING LENGTH = 253 FT
 A. ELEVATION 299' = 72.33 FT (21626.7)
 B. ELEVATION 301.4' = 108.25 FT (32626.5)
 C. ELEVATION 307.2' = 72.33 FT (22219.78)

SOUTH ELEVATION:
 TOTAL BUILDING LENGTH = 219 FT.
 A. ELEVATION 313.0' = 219 FT (68547.0)

NORTH ELEVATION:
 TOTAL BUILDING LENGTH = 219 FT
 A. ELEVATION 297' = 71.2 FT (21146.4)
 B. ELEVATION 300' = 88.5 FT (26550.0)
 C. ELEVATION 313' = 59.33 FT (18570.3)

TOTAL LENGTH = 944 FT
 TOTAL 290,146 / 944 = 307.35' AVERAGED GRADE

**THE LODGE
 CAMP VICTORY
 LAKE**

**NORTHEASTERN
 CONFERENCE**

**SEVENTH-DAY
 ADVENTIST
 CHURCH**

SMA
 ARCHITECTURE PLANNING INTERIORS PC
 ONE BALTIC PLACE
 CROTON-ON-HUDSON, NEW YORK 10520
 (914) 271-2712 info@sma-architects.com

SK - 05A

26 MAY 2021