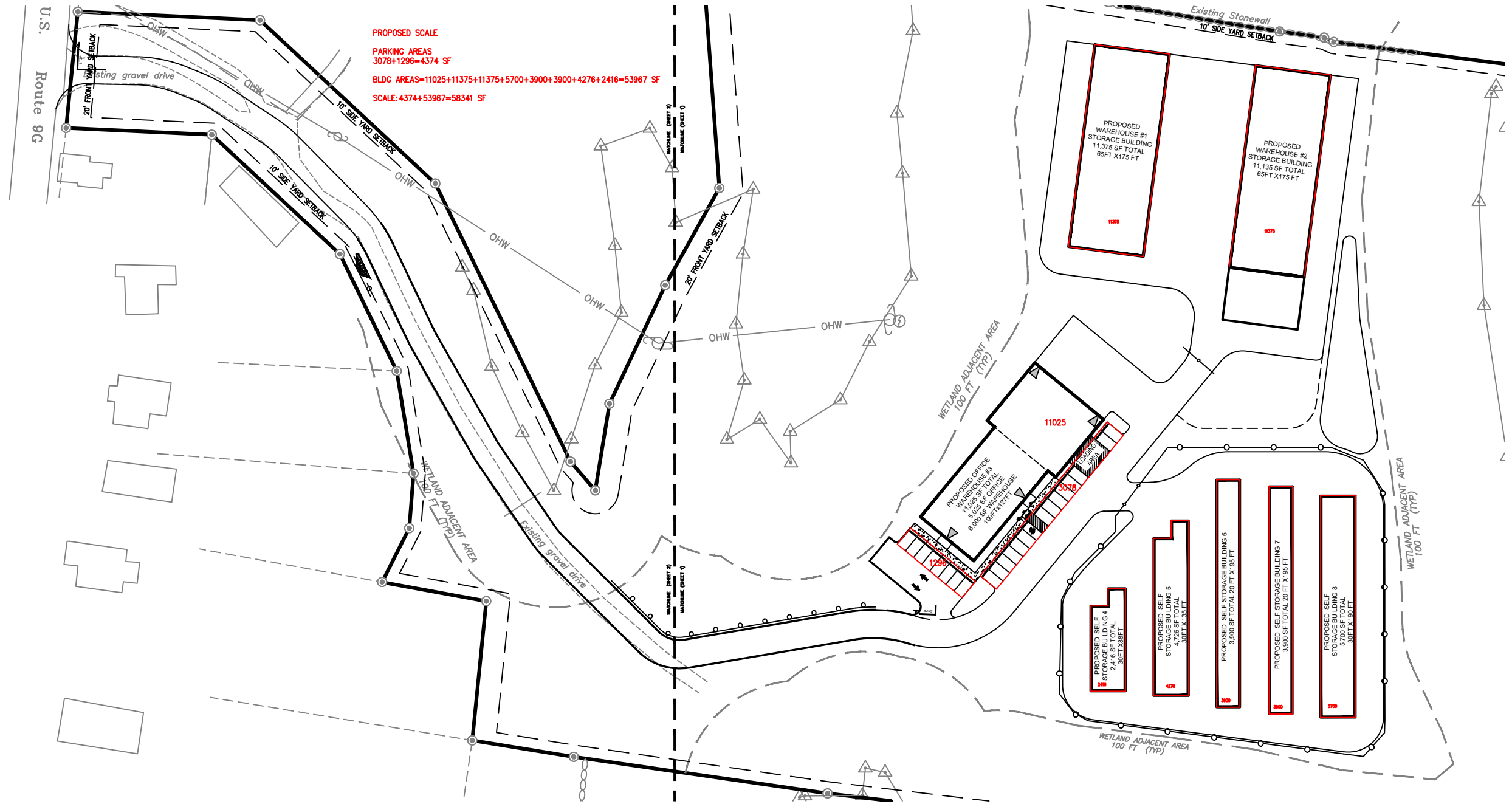


X:\JOBS\2020\20-2622-Key Interior-Hyde Park Drive Inn\DWG\PRX20262201.dwg 8/2/2021 4:04 PM Scurran



Land Planning ~ Civil Engineering
Environmental Services ~ Land Surveying ~ Landscape Architecture

www.lrcconsult.com

160 West Street, Suite E • 85 Civic Center Plaza, Suite 103 • 1 International Blvd, Suite 400
Cromwell, CT 06416 Poughkeepsie NY 12601 Mahwah, NJ 07495
Tel: 860.635.2877 Tel: 845.243.2880 Tel: 908.603.5730

LRC Engineering & Surveying, DPC, LRC Engineering & Surveying, LLC, LRC Environmental Services, Inc.

KEY CONSTRUCTION, LLC
1234 ROUTE 9G
TOWN OF HYDE PARK
DUTCHESS COUNTY, NEW YORK

PROPOSED SCALE

Design/Calcs	
Approved	
CAD File	PXR20262201.dwg
Project No.	20-2622
Date	
Scale	

Sheet No.

SC-1