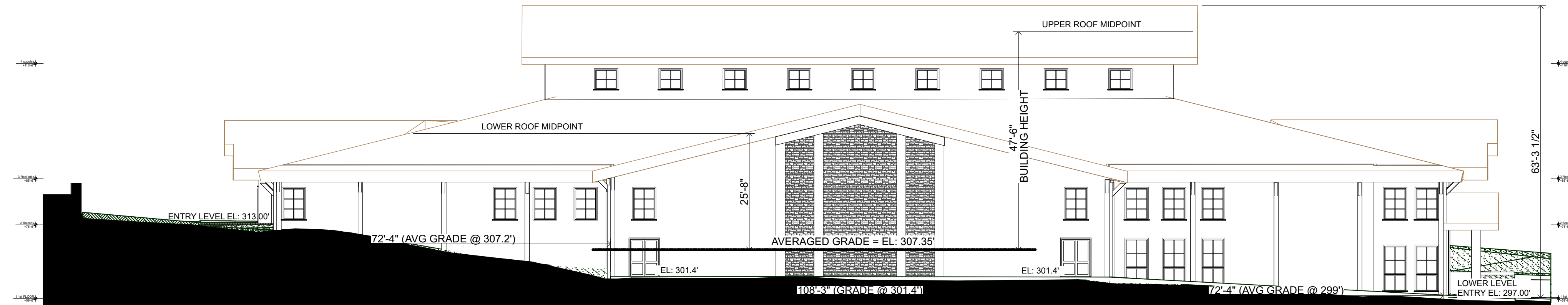


**WEST ELEVATION**

SCALE: 1/16" = 1'-0"

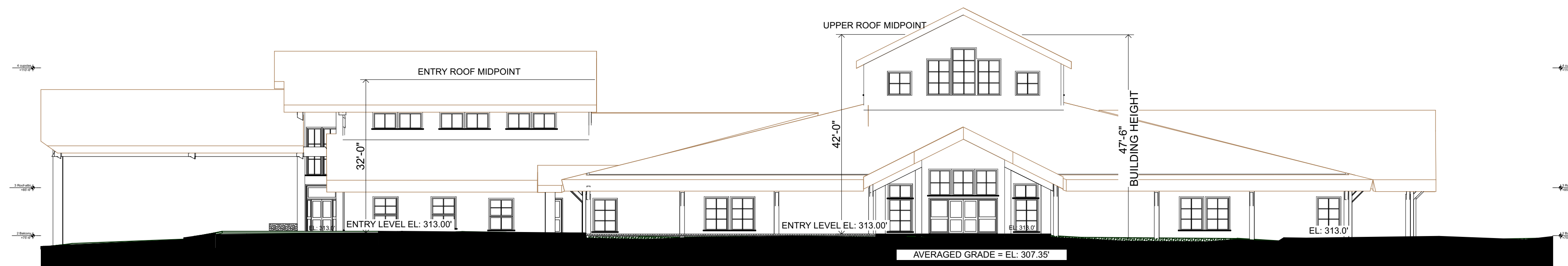
WEST ELEVATION: TOTAL BUILDING LENGTH = 253.0 FT; 14 FT @ EL:302.17'; 33 FT @ AVG EL:307.6'; 206 FT @ EL: 313.0'



**EAST ELEVATION**

SCALE: 1/16" = 1'-0"

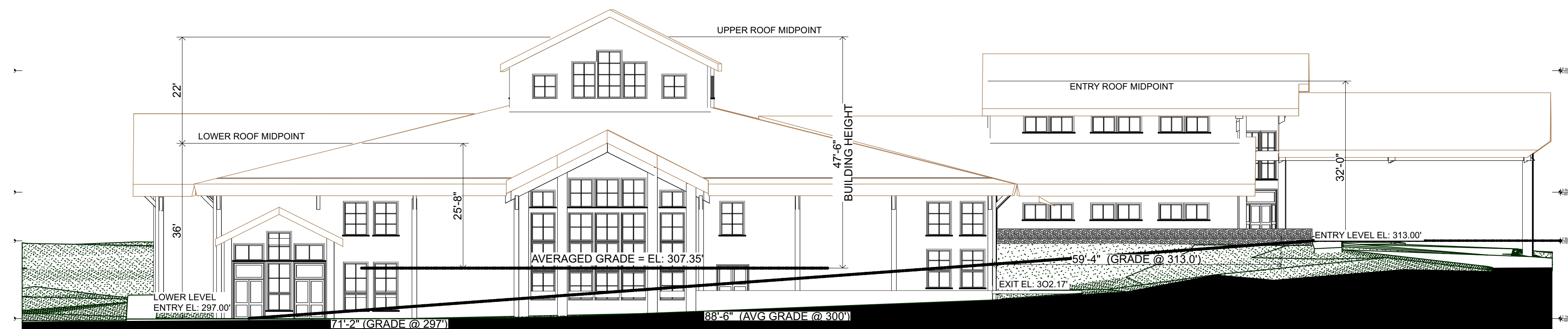
EAST ELEVATION: TOTAL BUILDING LENGTH = 253 FT; 72.33 FT @ AVG EL:307.2'; 108.25 FT @ EL:301.4'; 72.33 FT @ AVG EL: 299.0'



**SOUTH ELEVATION**

SCALE: 1/16" = 1'-0"

SOUTH ELEVATION: TOTAL BUILDING LENGTH = 219.0 FT; 219.0 FT @ EL: 313.0'



**NORTH ELEVATION**

SCALE: 1/16" = 1'-0"

NORTH ELEVATION: TOTAL BUILDING LENGTH = 219.0 FT; 71.2 FT @ EL:297.0'; 88.50 FT @ AVG EL:300.0'; 59.33 FT @ EL: 313.0'

**WEIGHED AVERAGE GRADE CALCULATION:**

WEST ELEVATION:  
 TOTAL BUILDING LENGTH = 253 FT.  
 A. ELEVATION 302.17' = 14 FT (4230.38)  
 B. ELEVATION 307.6' = 33 FT (10150.8)  
 C. ELEVATION 313.0' = 206 FT (64478.0)

EAST ELEVATION:  
 TOTAL BUILDING LENGTH = 253 FT  
 A. ELEVATION 299' = 72.33 FT (21626.7)  
 B. ELEVATION 301.4' = 108.25 FT (32626.5)  
 C. ELEVATION 307.2' = 72.33 FT (22219.78)

SOUTH ELEVATION:  
 TOTAL BUILDING LENGTH = 219 FT.  
 A. ELEVATION 313.0' = 219 FT (68547.0)

NORTH ELEVATION:  
 TOTAL BUILDING LENGTH = 219 FT  
 A. ELEVATION 297' = 71.2 FT (21146.4)  
 B. ELEVATION 300' = 88.5 FT (26550.0)  
 C. ELEVATION 313' = 59.33 FT (18570.3)

TOTAL LENGTH = 944 FT  
 TOTAL 290,146 / 944 = 307.35' AVERAGED GRADE

**THE LODGE  
 CAMP VICTORY  
 LAKE**

**NORTHEASTERN  
 CONFERENCE**

**SEVENTH-DAY  
 ADVENTIST  
 CHURCH**

**SMA**  
 ARCHITECTURE PLANNING INTERIORS PC  
 ONE BALTIC PLACE  
 CROTON-ON-HUDSON, NEW YORK 10520  
 (914) 271-2712 info@sma-architects.com

**SK - 05A**

26 MAY 2021