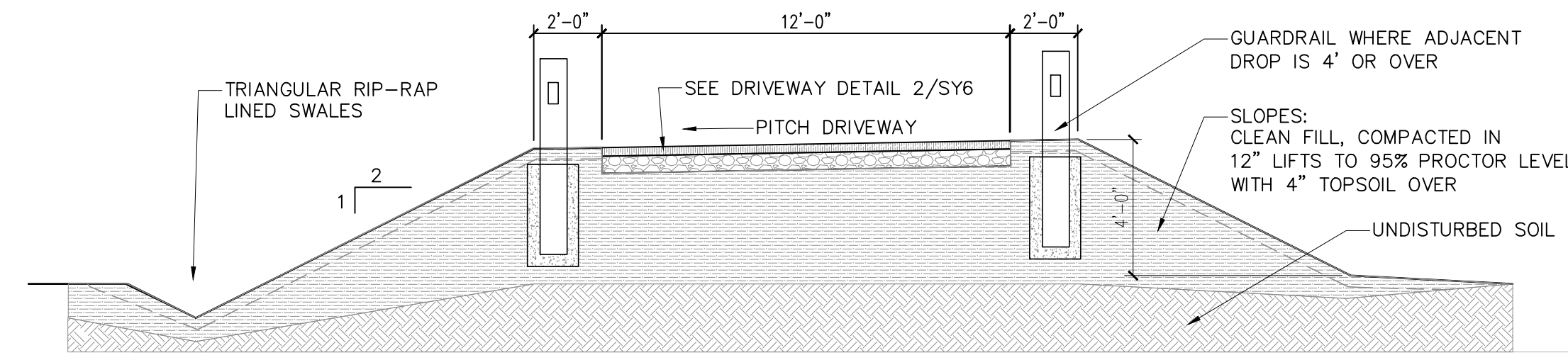
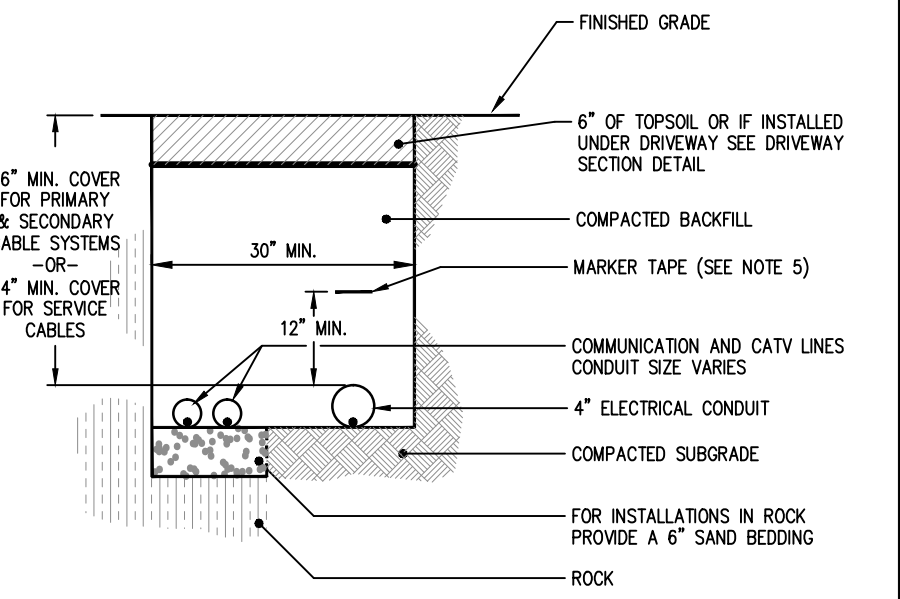


ITEM	LIMITS
A	12" MIN
B	2" MIN.
C	3/8" PER FT.
D	1/2" PER FT.



DRIVEWAY COMPACTION NOTES
 1. INSTALL IN 8" LIFTS AT MOISTURE CONTENT ESTABLISHED BY LABORATORY TESTING.
 2. COMPACT TO 95% PROCTOR LEVELS
 3. VERIFY COMPACTION WITH PENETROMETER

- NOTES:**
 1. CALL "BEFORE YOU DIG" (1-800-922-4455)
 2. PROVIDE P.V.C. CONDUIT WITH NYLON PULL CORD AS REQUIRED FOR EACH INDIVIDUAL UTILITY LINE. CONTRACTOR TO COORDINATE WITH INDIVIDUAL UTILITY COMPANIES THE DIAMETER OF CONDUIT REQUIRED.
 3. CONTRACTOR TO COORDINATE WITH EACH INDIVIDUAL UTILITY COMPANY AND THE DESIGN ENGINEER, ALL REQUIRED INSPECTIONS.
 4. MACHINE DIGGING SHALL STOP NOT LESS THAN 18" FROM VAULTS, FOUNDATIONS, EQUIPMENT, CABLES AND POLES. TRENCHING SHALL BE COMPLETED BY HAND THEREAFTER.
 5. ALL ELEC. BURIED CONDUITS SHALL BE IDENTIFIED BY A RED PLASTIC FILM MARKER TAPE, AS SPEC. BY THE UTIL. CO. THE MARKER TAPE SHALL RUN DIRECTLY ABOVE THE ENTIRE LENGTH OF EACH CONDUIT SECTION AND SHALL HAVE MINIMUM VERTICAL SEPARATION OF 12".
 6. A MINIMUM SEPARATION OF 30" SHALL BE MAINTAINED BETWEEN ELECTRICAL CONDUIT AND WATER SERVICE LINES. SEPARATION BETWEEN ELECTRICAL CONDUIT AND WATER MAIN SHALL BE 36".
 7. A MINIMUM SEPARATION OF 30" SHALL BE MAINTAINED BETWEEN ELECTRICAL CONDUIT AND GAS SERVICE LINES. JOINT TRENCHING IS NOT PERMITTED FOR MAIN GAS LINES.

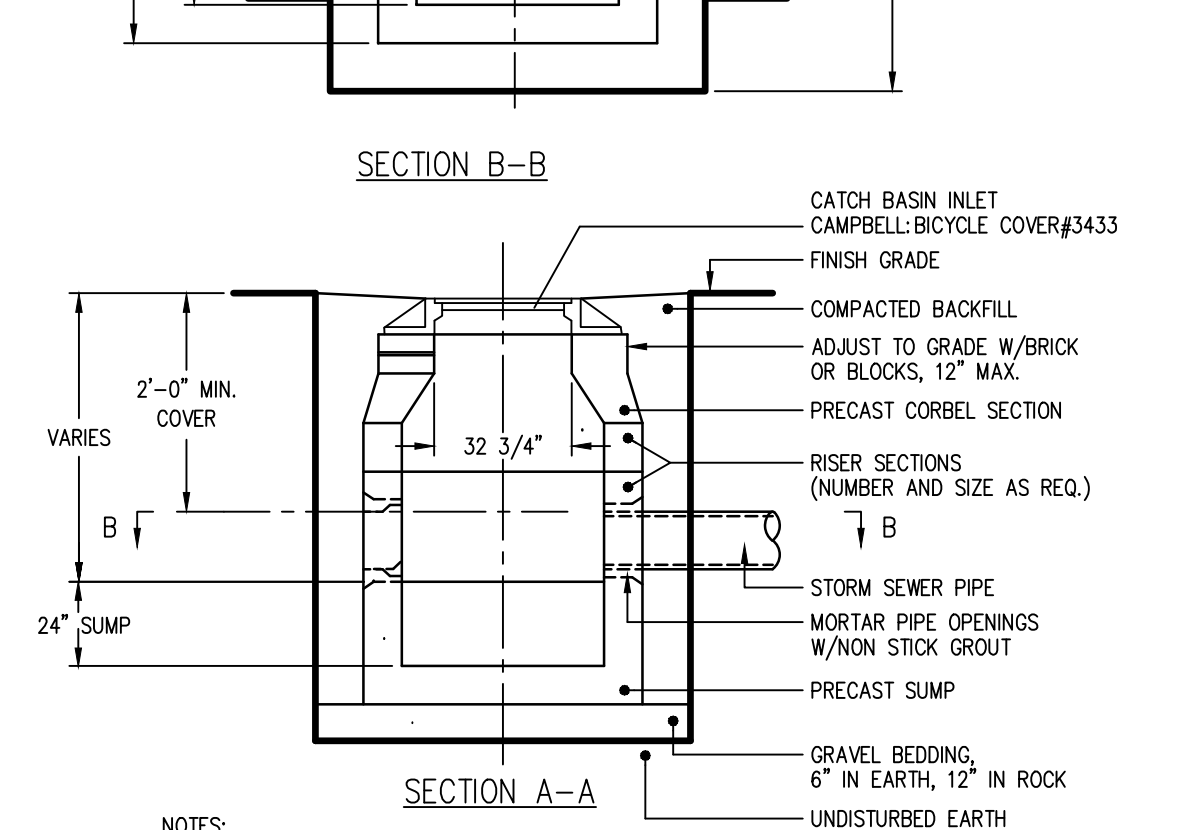
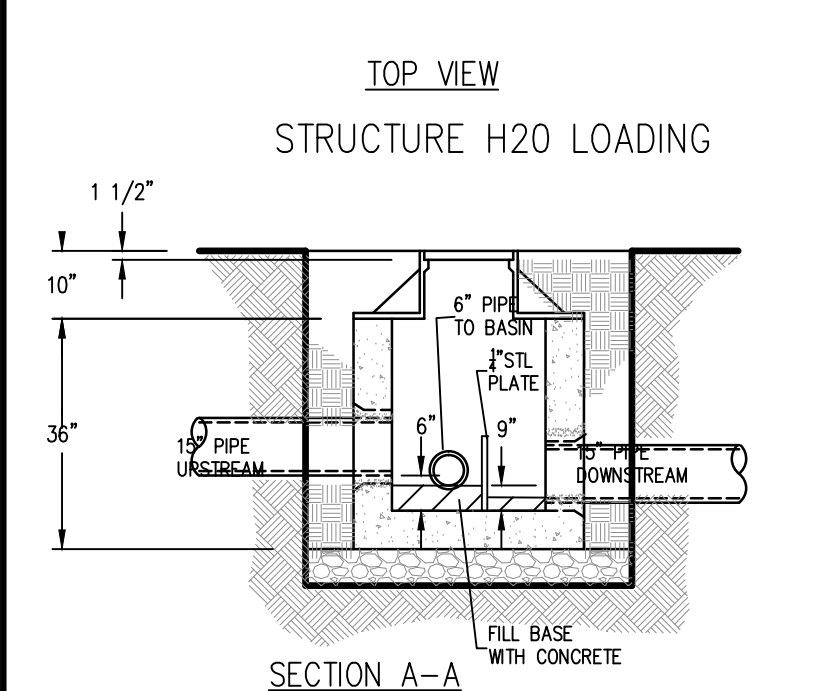
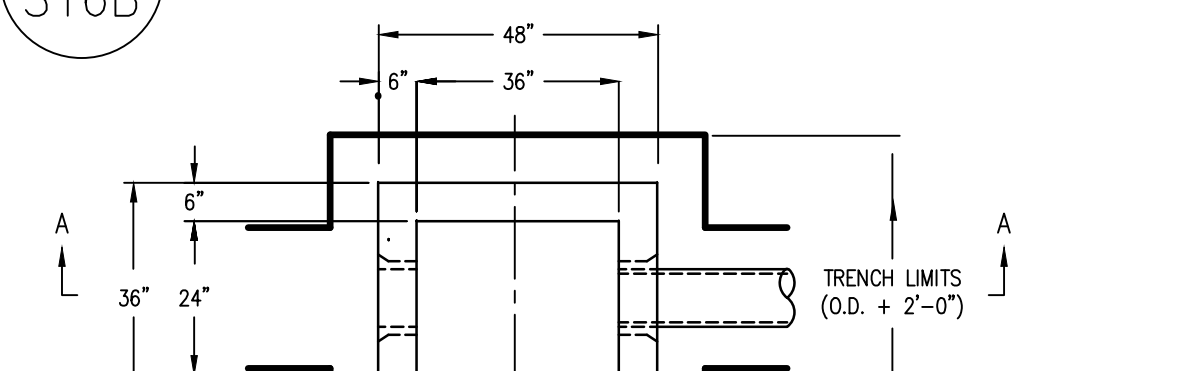
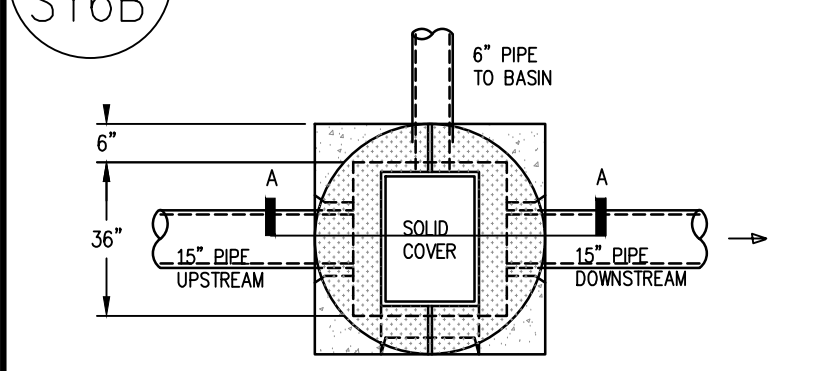


1 SY6B TYPICAL DRIVEWAY CROSS SECTION N.T.S.

2 SY6B DRIVEWAY CONSTRUCTION GEOMETRY N.T.S.

3 SY6B DRIVEWAY SECTION AT FILL LOCATION WITH SWALE N.T.S.

4 SY6B UTILITY LINE TRENCHING DETAIL N.T.S.

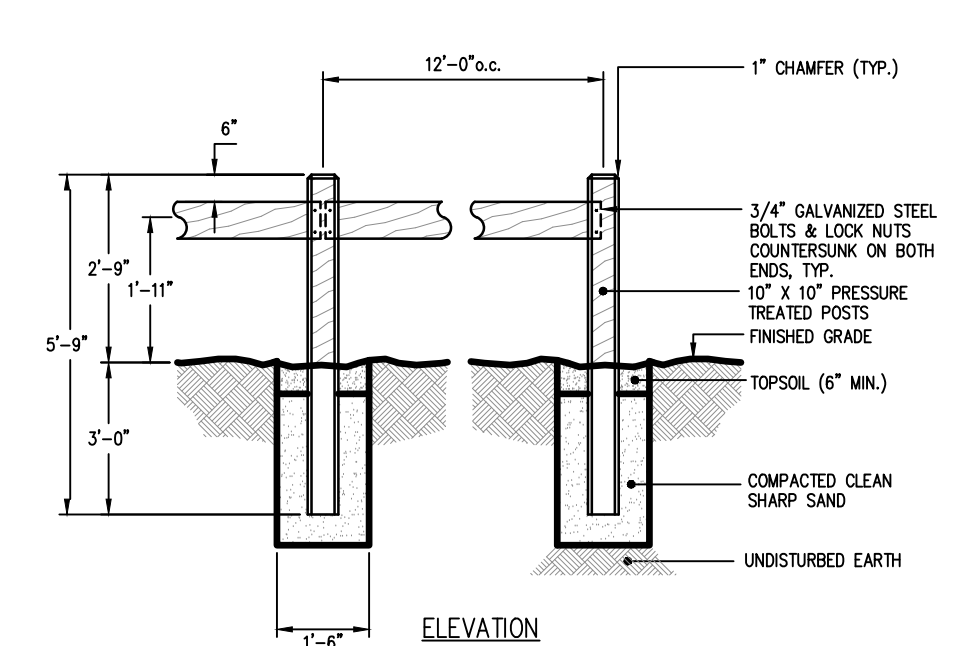
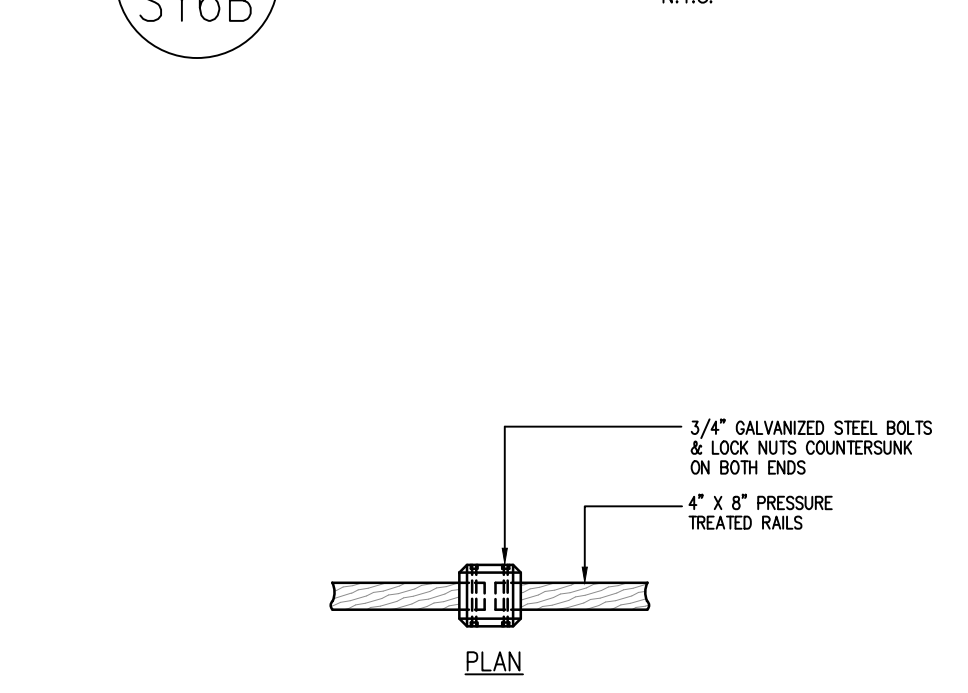


NOTES:
 1. 4000 PSI CONCRETE SHALL BE USED FOR ALL PRECAST BASES, SUMPS, TRANSITION, RISER AND CORBEL SECTIONS. REINFORCING AND SPECIFICATIONS SHALL CONFORM TO ASTM C-478, LATEST REVISED EDITION.
 2. CATCH BASIN TOPS IS ALSO KNOWN AS A "HEAVY DUTY, TYPE-C CATCH BASIN TOP" AS MANUFACTURED BY CAMPBELL-STREAM FLOW: #3433

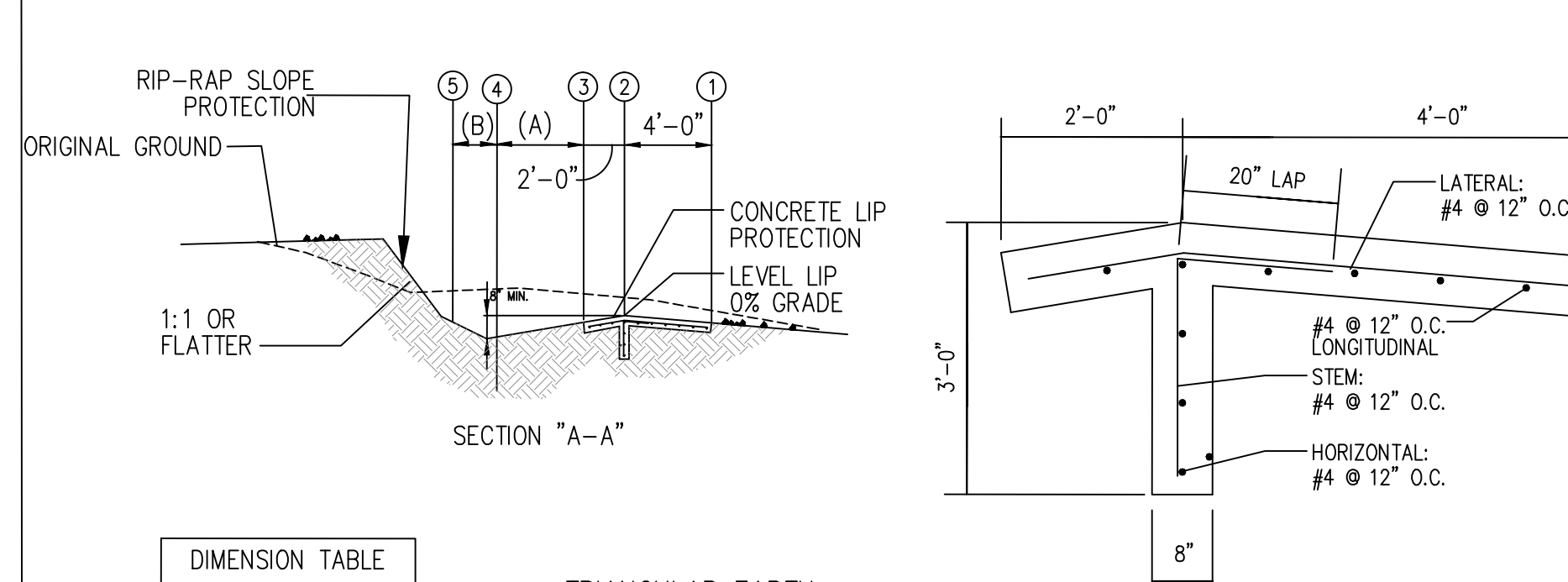
SPLITTER BOX ID	PIPE IN INVERT (15" INV)	PIPE OUT (8" INV)	WEIR ELEV	WEIR LENGTH	RIM ELEV
SP1	518.0	517.3	518.0	518.4	520.0
SP2	550.0	549.5	550.0	551.0	552.0
SP3	586.0	586.0	586.0	586.5	588.0

5 SY6B SPLITTER BOX N.T.S.

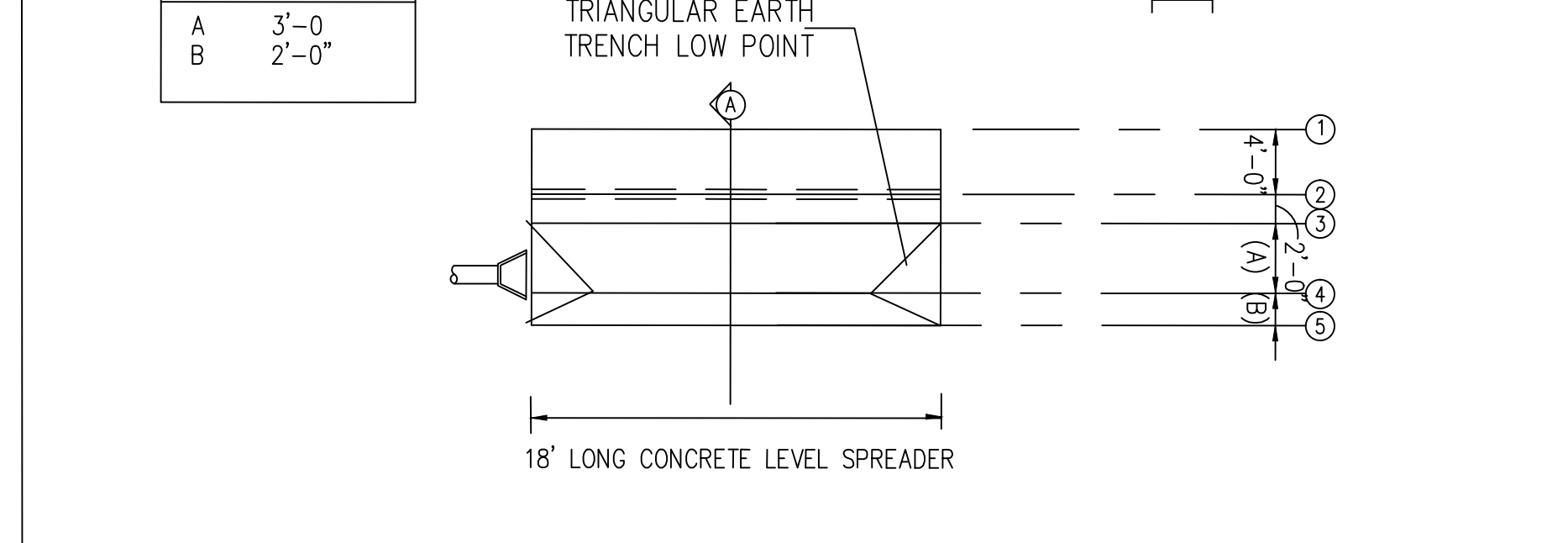
6 SY6B H2O LOADING YARD DRAIN/DROP INLET N.T.S.



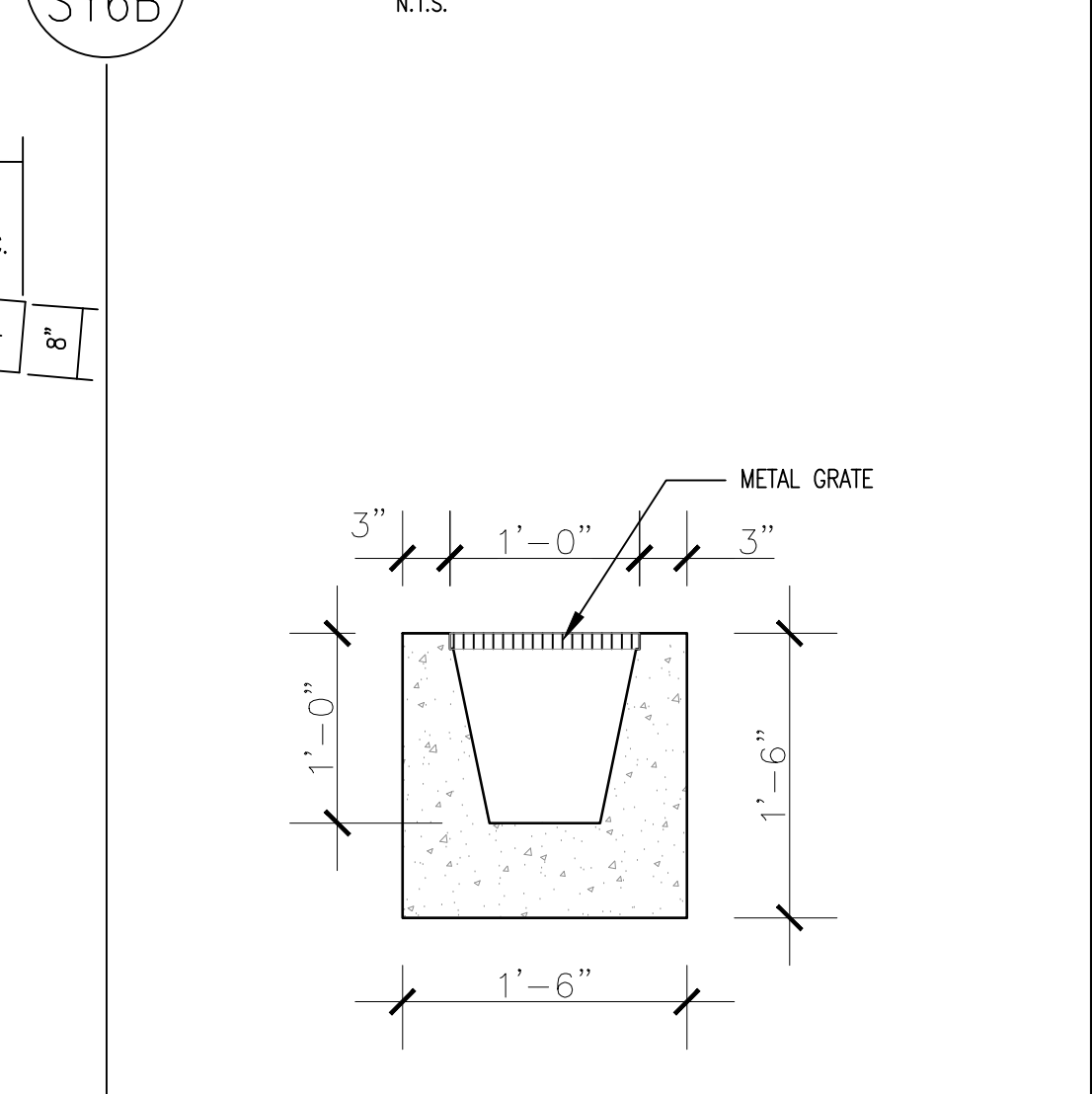
7 SY6B TYPICAL TIMBER GUIDERAIL DETAIL N.T.S.



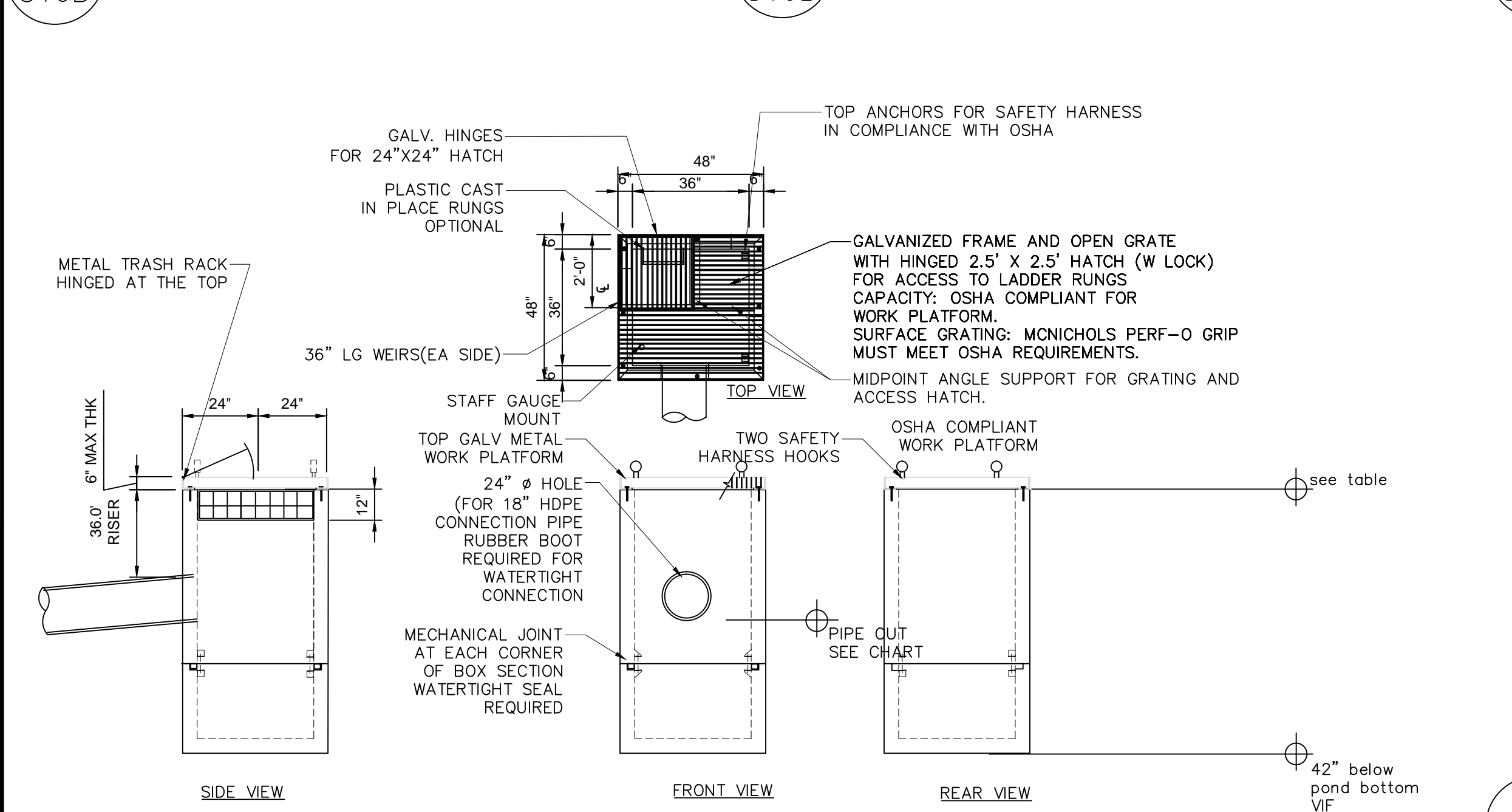
DIMENSION	VALUE
A	3'-0"
B	2'-0"



8 SY6B CONCRETE LEVEL SPREADER N.T.S.



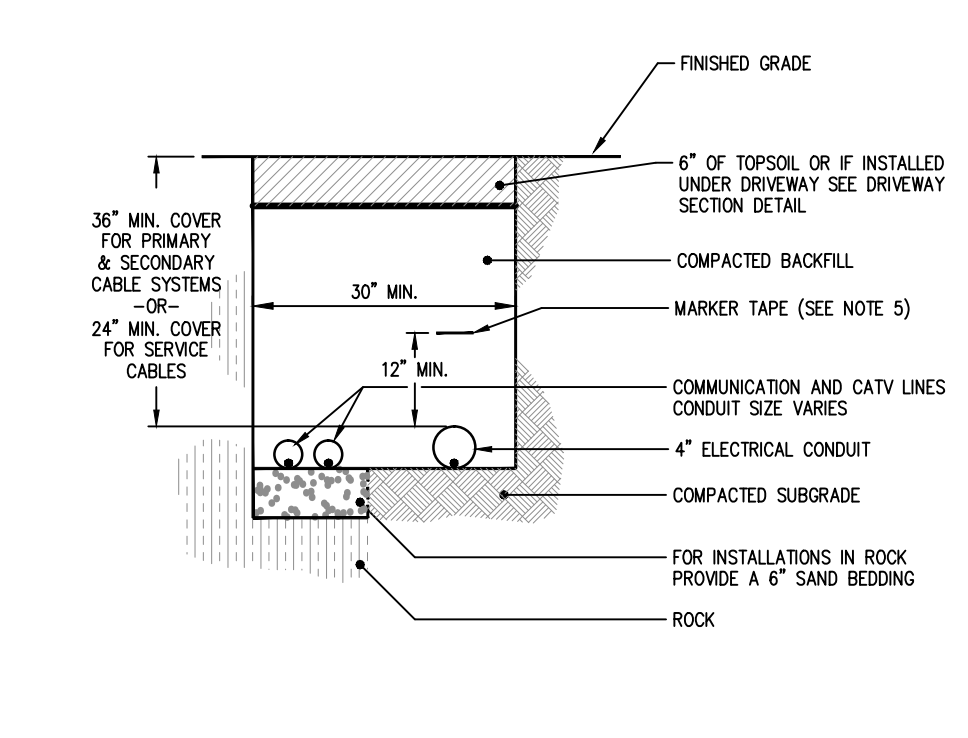
9 SY6B TRENCH DRAIN H2O LOADED N.T.S.



Structures	Pond Crest	static water elev	Rim Elev.	Concrete Riser Size	Pipe out Invert	Pipe size	Pipe FES Invert
LOWER POND	568.5	567.0	568.0	3x3'	564.0	18" Diam	562.0
Control weirs	two		567.0	3x12"			
UPPER POND	587.0	585.0	586.0	3x3'	582.5	18" Diam	581.0
Control weirs	two		585.0	3x12"			

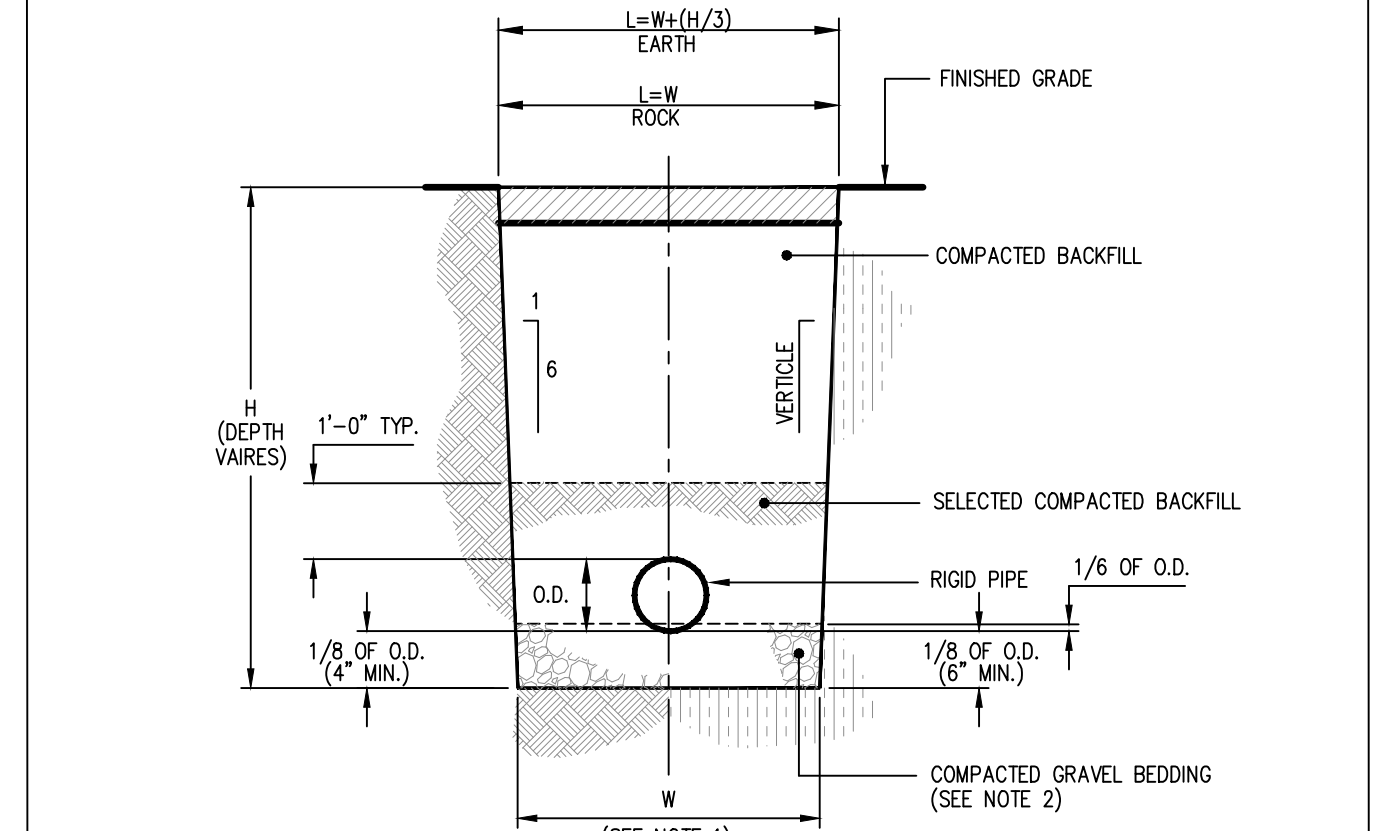
10 SY6B POND OUTLET STRUCTURE N.T.S.

- NOTES:**
 1. CALL "BEFORE YOU DIG" (1-800-922-4455)
 2. PROVIDE P.V.C. CONDUIT WITH NYLON PULL CORD AS REQUIRED FOR EACH INDIVIDUAL UTILITY LINE. CONTRACTOR TO COORDINATE WITH INDIVIDUAL UTILITY COMPANIES THE DIAMETER OF CONDUIT REQUIRED.
 3. CONTRACTOR TO COORDINATE WITH EACH INDIVIDUAL UTILITY COMPANY AND THE DESIGN ENGINEER, ALL REQUIRED INSPECTIONS.
 4. MACHINE DIGGING SHALL STOP NOT LESS THAN 18" FROM VAULTS, FOUNDATIONS, EQUIPMENT, CABLES AND POLES. TRENCHING SHALL BE COMPLETED BY HAND THEREAFTER.
 5. ALL ELEC. BURIED CONDUITS SHALL BE IDENTIFIED BY A RED PLASTIC FILM MARKER TAPE, AS SPEC. BY THE UTIL. CO. THE MARKER TAPE SHALL RUN DIRECTLY ABOVE THE ENTIRE LENGTH OF EACH CONDUIT SECTION AND SHALL HAVE MINIMUM VERTICAL SEPARATION OF 12".
 6. A MINIMUM SEPARATION OF 30" SHALL BE MAINTAINED BETWEEN ELECTRICAL CONDUIT AND WATER SERVICE LINES. SEPARATION BETWEEN ELECTRICAL CONDUIT AND WATER MAIN SHALL BE 36".
 7. A MINIMUM SEPARATION OF 30" SHALL BE MAINTAINED BETWEEN ELECTRICAL CONDUIT AND GAS SERVICE LINES. JOINT TRENCHING IS NOT PERMITTED FOR MAIN GAS LINES.



11 SY6B UTILITY LINE TRENCHING DETAIL N.T.S.

1. FOR UNSHEETED TRENCH WHERE PIPE O.D. IS 6" OR LESS THAN, PAYMENT WIDTH (W) = 2'-6", WHERE PIPE O.D. IS GREATER THAN 6" BUT LESS THAN OR EQUAL TO 36" THEN, W = O.D. + 2'-0"; WHERE PIPE O.D. IS GREATER THAN 36" THEN, W = O.D. + 3'-0"
 2. IF SUITABLE GRANULAR PIPE BEDDING MATERIAL IS AVAILABLE FROM ON SITE EXCAVATIONS, IT SHALL BE UTILIZED PROVIDED IT CONFORMS WITH THE "STANDARD SPECIFICATIONS", AND IS APPROVED BY THE ENGINEER. NO PAYMENT SHALL BE MADE FOR THIS MATERIAL.
 3. TYPICAL FOR PIPE MATERIALS SPECIFIED, AS, DUCTILE IRON PIPE OR STEEL PIPE, HDPE PER MANUF. SPECS.
 4. SHEETING OR SHORING OF TRENCH WALLS, WHERE UNSUITABLE CONDITIONS EXIST, IS THE SOLE RESPONSIBILITY OF THE CONTRACTOR.
 5. FOR ROCK REMOVAL DEPTHS (H) GREATER THAN 10', INCREASE PAYMENT WIDTH (W) BY 6". REMOVAL DEPTH SHALL BE MEASURED FROM THE TOP OF EXPOSED SURFACE.



12 S6B DRAINAGE PIPING BACKFILL N.T.S.

No.	Date	Description	Revisions		Dwg. Title	Scale
			No.	Date		
					SITE_CONSTRUCTION_DETAILS	AS_NOTED

P. W. SCOTT
 ENGINEERING & ARCHITECTURE, P.C.
 3871 ROUTE 6
 BREWSTER, NY 10509 845-278-2110

Project Title: HIGHBURY-ESTATE-SITE_PLAN
 Proj. No. 20-131
 Date: 3/30/21
 Drawn by: PWS

SY6B