

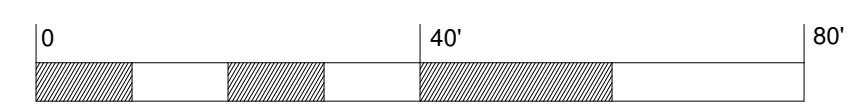
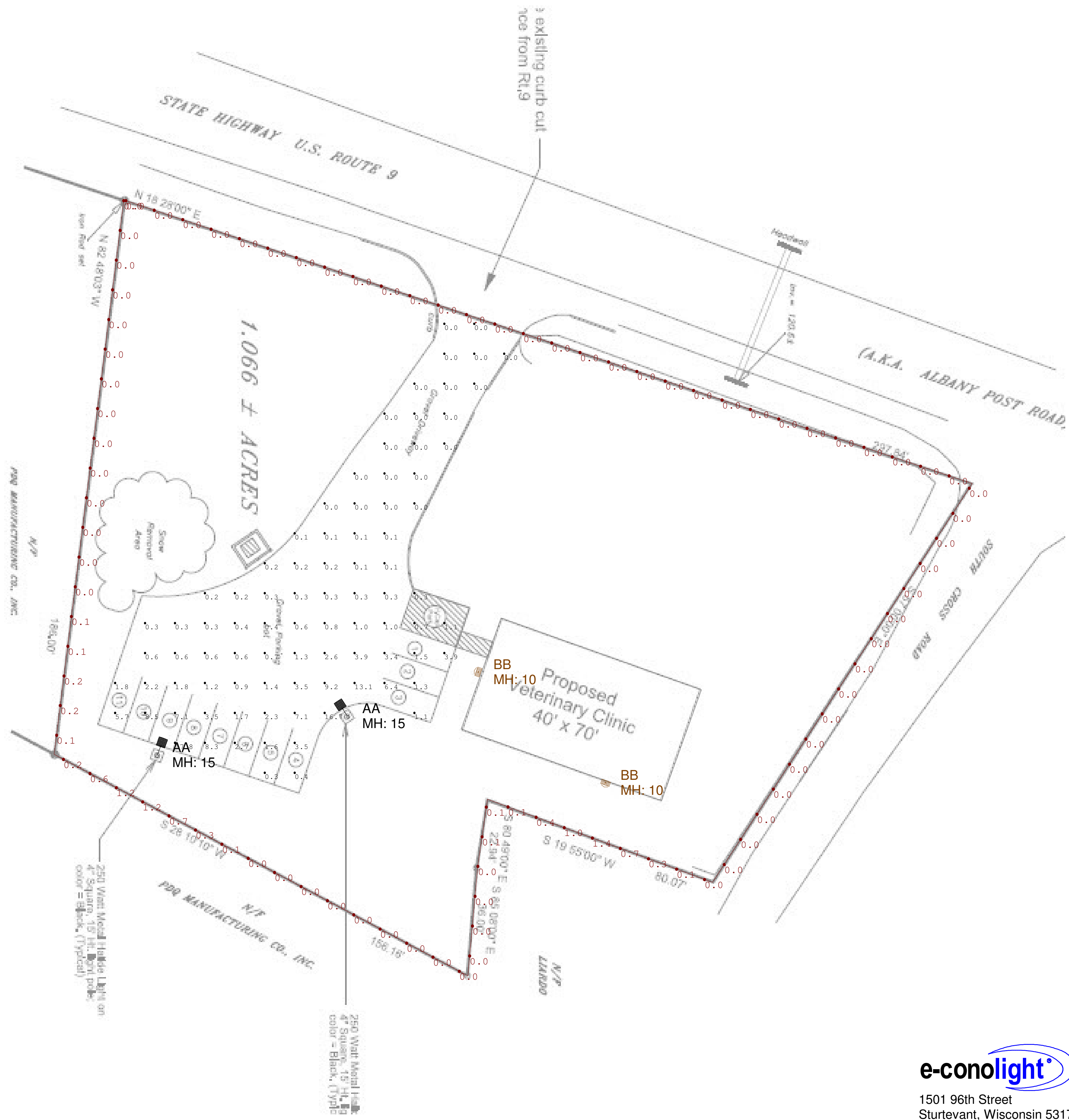
Symbol	Qty	Label	Arrangement	Lumens/Lamp	LLF	Total Watts	Description
AA	2	AA	SINGLE	N.A.	1.000	310	E-AL1L315CZ
BB	2	BB	SINGLE	N.A.	1.000	150	E-WP11L07UCZ

Label	Avg	Max	Min	Avg/Min	Max/Min
CalcPis_1	1.85	17.8	0.0	N.A.	N.A.
PROPERTY LINE	0.10	1.4	0.0	N.A.	N.A.

Pole Schedule:  
 (2) E-PS4E15C1DB (4" x 15' x 0.125" SQUARE STEEL POLE)  
 Proposed Poles Meets 100MPH Sustained Winds.

Additional Required Equipment:  
 (2) E-ACESB (6" MOUNTING ARM)

\*\*\*Customer to verify Color, Mounting, Fixture Location and Voltage prior to ordering.\*\*\*



1501 96th Street  
 Sturtevant, Wisconsin 53177  
 PH: (888) 243-9445  
 FX: (262) 504-5409  
 www.e-conolight.com

Customer responsible to verify ordering information/  
 catalogue number prior to placing order.

Date: 12/15/2016	Scale: 1"=20'	Layout by: Nicholas Krahn
Project Name: Mintzer Veterinary Bldg.	SR-18172	
Filename: 161004DV1NWK2.AGI		
Footcandles calculated at grade using initial lumen values		

Illumination results shown on this lighting design are based on project parameters provided to E-conolight used in conjunction with luminaires test procedures conducted under laboratory conditions. Actual project conditions differing from these design parameters may affect field results. The customer is responsible for verifying dimensional accuracy along with compliance with any applicable electrical, lighting, or energy code.