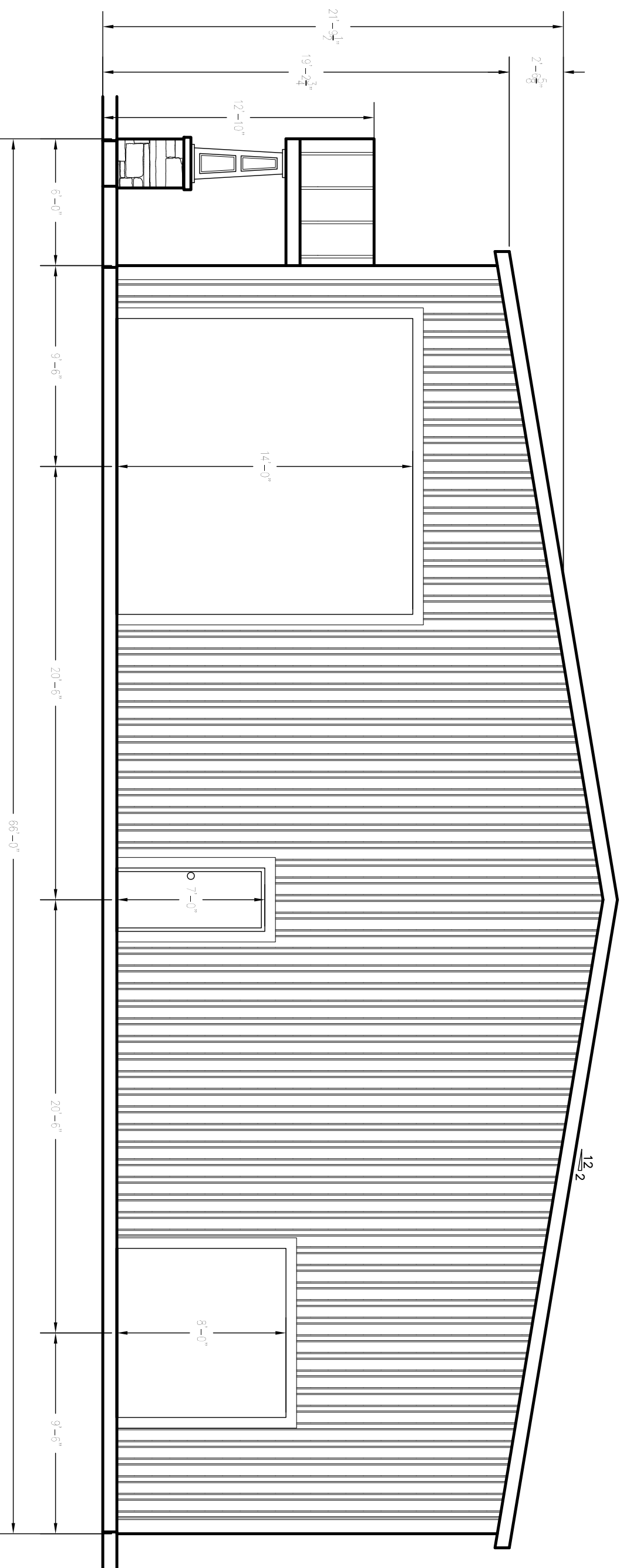
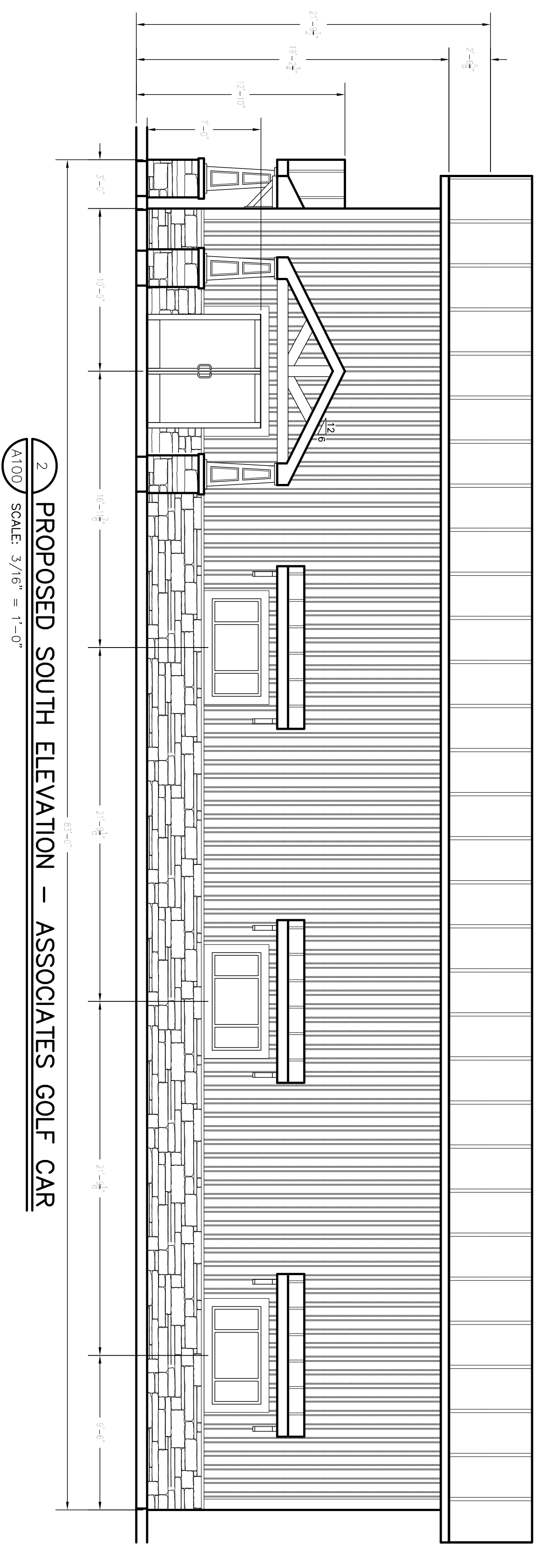


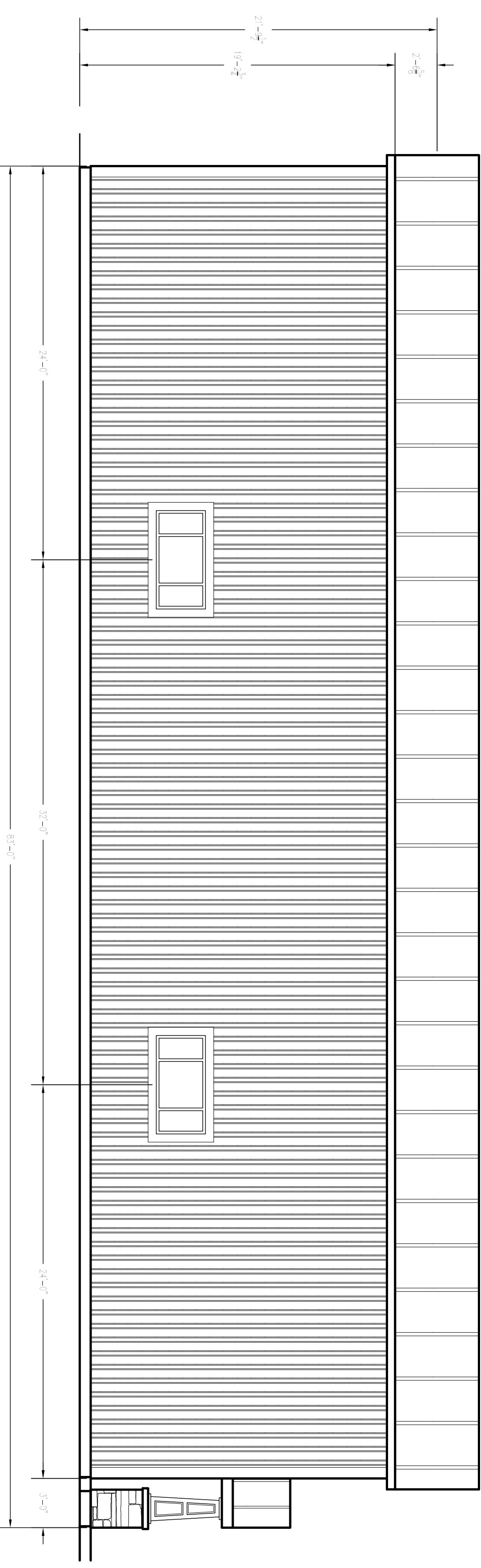
1 PROPOSED WEST ELEVATION – ASSOCIATES GOLF CAR
A100 SCALE: 3/16" = 1'-0"



3 PROPOSED EAST ELEVATION – ASSOCIATES GOLF CAR
A100 SCALE: 3/16" = 1'-0"



2 PROPOSED SOUTH ELEVATION – ASSOCIATES GOLF CAR
A100 SCALE: 3/16" = 1'-0"



4 PROPOSED NORTH ELEVATION – ASSOCIATES GOLF CAR
A100 SCALE: 3/16" = 1'-0"

PLEASE NOTE THAT ALL DIMENSIONS
MUST BE VERIFIED IN THE FIELD PRIOR
TO THE START OF CONSTRUCTION.

Mark A. Day, PE	
DATE	02-05-18
SCALE	As Noted
DESIGNER	J.D.
CHECKER	MAD
PROJECT	Associates Golf Car
LOCATION	Town of Hyde Park, Dutchess County, New York
CLIENT	Proposed Elevations
DATE	03/06/2018
JOB NO.	
LICENSE NO.	069946
PROJECT	M.A. DAY Engineering, PC
CONSULTING ENGINEERS	Consulting Engineers
1 Van Nyck Lane	
Suite 2	
Wappingers Falls, New York 12590	
(845) 223-5202	